

Overview of the  
Livability Lane Website  
and Toolkit:

Prepared by:  
Lane Council  
of Governments

# LIVABILITYLANE

building smarter communities together

[livabilitylane.org](http://livabilitylane.org)

# LIVABILITYLANE

 Toolkit

[livabilitylane.org/toolkit](http://livabilitylane.org/toolkit)





LivabilityLane.org is the virtual home of the Lane Livability Consortium. The site also provides an introduction to the organization, mission and work of Livability Lane. It houses the **Livability Lane Toolkit**, a cross-sector web based platform for information related to sustainable community planning and development. The home page includes a search bar for site content and widgets for email list sign up, or for connecting with the consortium through social media.



The Lane Livability Consortium was founded in 2010 to bring together Lane County, Oregon regional leaders in economic development, higher education, transportation, affordable housing, water and energy, and social equity to build upon the Eugene-Springfield region's successes and to further integrate livability into our plans and strategies.

**About the Lane Livability Consortium**

**Lane Livability Consortium Projects**

### LIVABILITYLANE Toolkit

Introduction to the Consortium, including a listing of partners, contact information and a slideshow.



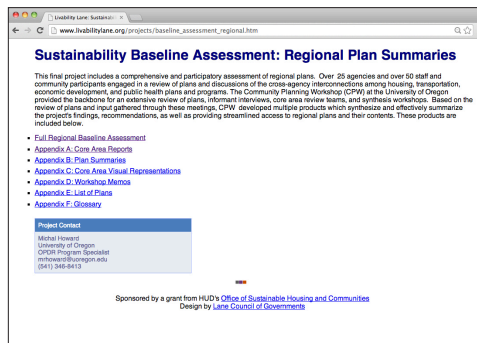
Overviews of the Lane Livability Consortium are organized for quick access

<b>Public Participation Strategies</b>	<b>Community and Regional Plans</b>	<b>Regional Data</b>
<b>Tools for Balanced Decision Making</b>	<b>Economic Prosperity</b>	<b>Equity and Opportunity</b>
<b>Community Resiliency</b>	<b>Healthy Communities</b>	<b>Coalition Building</b>

The Livability Toolkit provides useful resources and links organized within nine livability themes or "modules."



Each project has a dedicated page where deliverables are available for download and contact information can be obtained



The **Livability Lane Toolkit** is an interagency and cross-sector web based platform for information related to sustainable community planning and development. It includes the wealth of reports, maps and projects that emerged from the work of the Lane Livability Consortium, as well as other resources. The Toolkit is a shared space for accessing resources and insights relevant to sustainability.

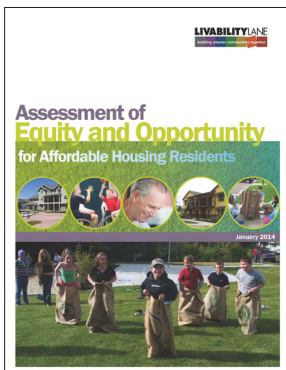


## A "One Stop" Shop

Information is very important to the analysis and decision making of planners and elected officials in our region. Practicing professionals in all fields are developing and using information in new ways to assess needs and community conditions, to target limited resources, and to improve connections between disciplines. The Toolkit assembles a vast amount of information into a consistent and user friendly format.

## It starts with a Question

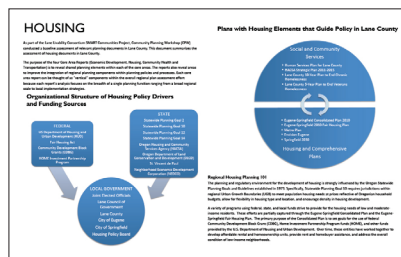
The Toolkit is organized into nine thematic and easily navigated "modules," making it a user friendly tool for getting both higher-level and in-depth information related to a question. Like a librarian, the Toolkit starts with broad themes and narrows into specific concepts and greater detail. The Toolkit connects the user with desired content in as few clicks as possible. The Toolkit provides both quick and organized access to reports and useful links while at the same time providing a guided tour, that distills lengthy reports and highlights interconnections providing answers to questions and resources for further researching.



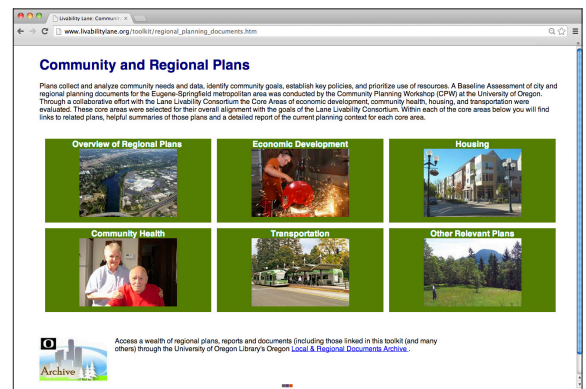
Links to detailed studies, reports and other related documents



Links to documents, summaries and websites with additional information



Information presented at higher summary levels



Sub-modules to facilitate further refinement in a thematic search



Within the Public Participation Strategies module users will find reports, summaries and links with recommendations and ideas for conducting more thorough outreach, particularly in reaching out to marginalized communities.

## Public Participation Strategy



## Key Resources:

- Latino Public Participation and Community Indicators Project
- Latino Community Outreach Best Practices and Recommendations
- Latinos in Lane County: A Profile with Indicators of Community Wellbeing
- Public Participation Guidelines and Local and National Outreach Resources

**Enhancing Public Participation**

The Lane Livability Consortium has identified a number of ways our region can improve public participation methods in general and specifically for marginalized communities. The Baseline Assessment specifically recommends the development of a peer-to-peer working group on public participation, development of resources to help with reaching marginalized communities, and exploration of more comprehensive needs assessments. A number of concerns have been identified related specifically to members of the Latino community, which primarily center on perceptions of insecurity and community belonging as well as concerns about access to quality affordable housing, transportation, parks, health services, and community gardening spaces.

**Public Participation Tools and Resources**

**Outreach to the Latino Community**

Sponsored by a grant from HUD's Office of Sustainable Housing and Communities  
Design by Lane Council of Governments

**Tools and Resources for Public Participation**

**Active Boards, Councils, and Commissions**

- City of Eugene  
Boards and Commissions
- Eastern Multiracial City Council
- City of Springfield  
Boards and Commissions
- Milano and City Council
- Lane County  
Board of Commissioners
- Advisory Commissions and Boards
- Calendar of Scheduled Meetings
- Guide for Facilitating Discussions and Decision Making Processes
- Robert's Rules of Order

**City of Eugene Resources**

- Diversity and Equity Strategic Plan
- Environment Self Assessment
- Framework for Language Access Planning
- 2011 Neighborhood Analysis
- Neighborhood Outreach Training Materials
- Public Participation Guidelines

For more information on City of Eugene Resources, please contact [Laura.Florance](mailto:Laura.Florance@eugene-or.gov) with Human Rights & Neighborhood Involvement at the City of Eugene's City Manager's Office

A broad range of resources and links to Public Participation Resources

**Outreach to Latino Community**

The Latino population in Lane County is diverse and expanding. By being sensitive to the diversity that exists within the Latino community, it is possible to effectively include Latinos in planning and development efforts through outreach. Outreach can be based on needs that acknowledge the area's socio-political climate. Application of unique public participation tools and techniques can be effective for use in reaching out to the population and representation of the most marginalized groups in Lane County, Oregon.

The Latino Participatory Research Project, led by University of Oregon Professor Dorenda Barstow in partnership with Rightline Institute, was completed in the Spring of 2013. The project developed best practices and best outreach strategies to reach the Latino community and identify economic and social indicators of experience to the Latino community through outreach and participation with the Latino community. The project utilized a wide range of methods including: narrative interviews with Latino leaders and community members, focus groups, and best practices community planning workshops that engaged almost 100 people. Two local community-based organizations that serve the Latino Community, Health de la Familia and Derechos Language, helped organize and recruit participants for the community workshops. Links and available resources developed during the project are linked below, and should be used for all efforts to connect with and better understand this unique community in Lane County.

View the Latino Public Participation and Community Indicators Project (PDF - University of Oregon, 2013)  
(Dorenda Barstow, et al., University of Oregon) [Main slide/Pastor Rodriguez's research](#)

**Key Report Findings**

- Latino Community Outreach Best Practices and Recommendations
- Latino Demographics & Gender
- Latino Population Distribution Map
- Latino Population Social Equity Indicators

**Latinos in Lane County: A Profile with Indicators of Community Wellbeing (2013)**  
Prepared by Sightline Institute

For those looking to strengthen outreach to, or simply wanting to know more about this unique community, refer to this helpful list of contacts within the Latino Community in the region: [Latino Community Key Contacts](#) (Excel format)

**PLACE IT** was used in the recent Latino outreach effort, and is a design-based urban planning initiative that uses model-building workshops and on-site interactive models to help engage the public in the planning and design process. Learn more by checking out their [website](#).

## Links to documents

**Latinos in Lane County: A Profile with Indicators of Community Wellbeing**

Prepared for:  
Lane Livability Consortium

Prepared by:  
Sightline Institute  
Lori New, Alex Scott  
Sightline.org

April 2013

Latinos in Lane County: A profile with indicators of community well being

**Latino Public Participation and Community Indicators Project**

Developing a Toolkit of Understanding and Enhancing Community in Lane County, Oregon

November 2013

Latino Public Participation and Community Indicators Report

Sub-module dedicated to resources for reaching out to the Latino community in Lane County

**Latino Community Outreach Best Practices and Recommendations**

From the Latino Public Participation Report

- Pay attention to informal networks within the Latino community because their informal communication structures play significant roles in successfully disseminating information and knowledge.
- Contexts, or trust, is important within the Latino community. Hence, social networks are important in reaching Latino public participation goals and in encouraging participation with organizations that have effectively built trust within the Latino community and that provide a great service to the community.
- Provide opportunities for informal interaction by creating spaces that feel culturally Latin.
- Trust or trust who are culturally competent. The Office of Minority Health (OMH), for example, emphasizes cultural relevance to authority and respectability amongst ethnic CBOs. Health care providers are trained at health care organizations, so feel that one County's Latino community would benefit if other organizations worked under similar guidelines. However, it is important that health care providers and organizations be open to a culturally competent staff for the necessary 1:1 care investigations. If there are a high demand, and (2) every staff person in these organizations should be able to adequately serve the Latino population.
- Reciprocate the public participation workshops at a larger scale throughout Eugene/Springfield.
- Make sure the indicators developed by Sightline to get a clear idea of how Lane County is progressing on important issues Latino faces.

Sponsored by a grant from HUD's Office of Sustainable Housing and Communities  
Design by Lane Council of Governments

Latino Community Outreach Recommendations

Organization	Contact Name	Phone	Email
Advisory Commission on the Status of Women	...	...	...
Advisory Commission on the Status of Children	...	...	...
Advisory Commission on the Status of the Elderly	...	...	...
Advisory Commission on the Status of the Youth	...	...	...
Advisory Commission on the Status of the Environment	...	...	...
Advisory Commission on the Status of the Arts and Culture	...	...	...
Advisory Commission on the Status of the Community	...	...	...
Advisory Commission on the Status of the Economy	...	...	...
Advisory Commission on the Status of the Health Care System	...	...	...
Advisory Commission on the Status of the Housing Market	...	...	...
Advisory Commission on the Status of the Labor Market	...	...	...
Advisory Commission on the Status of the Legal System	...	...	...
Advisory Commission on the Status of the Public Safety System	...	...	...
Advisory Commission on the Status of the Transportation System	...	...	...
Advisory Commission on the Status of the Urban and Rural Development	...	...	...
Advisory Commission on the Status of the Water and Sewerage System	...	...	...
Advisory Commission on the Status of the Waste Management System	...	...	...
Advisory Commission on the Status of the Energy System	...	...	...
Advisory Commission on the Status of the Information System	...	...	...
Advisory Commission on the Status of the International System	...	...	...
Advisory Commission on the Status of the Global System	...	...	...

Latino Community Key Contacts

**Latino Demographics**

Quick Links: [AGE](#) | [EDUCATION](#) | [ORIGIN/GENEALOGY](#) | [DISTRIBUTION](#) | [INCOME & BENEFITS](#)

**AGE**

Lane County's Latino population tends to be younger than the overall population.

Based on its growth, perhaps the most distinctive characteristic of the Latino community in Lane County is its youth. The median age among Lane County Latinos is 29, which is the median age for the entire population in the county is 39. 22 percent of the county's Latino population is under the age of 18, compared with 10 percent of the population of Lane County as a whole. At the other end of the age spectrum, 1 percent of Latinos were 75 years or older, compared with 11 percent of the population of Lane County.

Recent migration explains the youthfulness of Lane County's Latinos. Most Latino growth in the county came from migration, and migration is mostly a young person's activity. The median age of the population that migrated to Lane County in the past decade of 2000-2010 was 25 years old. This is a young age for migration, and it is a young age for migration. This is a young age for migration, and it is a young age for migration. This is a young age for migration, and it is a young age for migration.

Figure 1: The Latino population of Lane County, Oregon, is much younger than the white population.

Profile of the Latino community in region

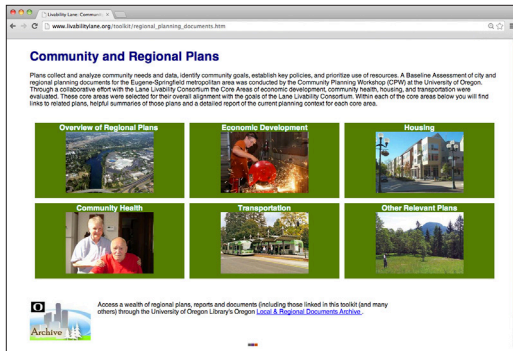


The Community and Regional Plans module organizes a vast number of local plans and related resources. The often laborious and sometimes prohibitive task of referencing relevant local plans in project work is made very easy through the resources in this module.



### Key Resources:

- A Baseline Assessment (overview) of Regional Plans
- Core Area Reports and Visualizations for Housing, Economic Development, Transportation, Community Health
- Over 50 standardized plan summaries and direct access to over 75 full plans.
- Links to related agencies and other resources
- Link to the Local and Regional Documents Archive(UO)



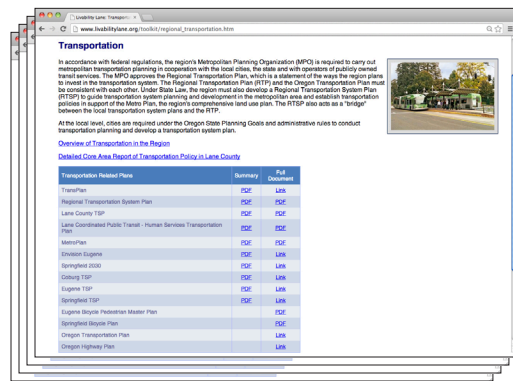
Links to documents, summaries and websites through the Local and Regional Documents Archive(UO)



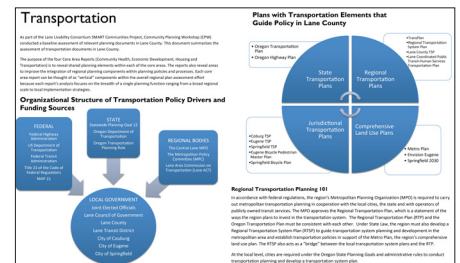
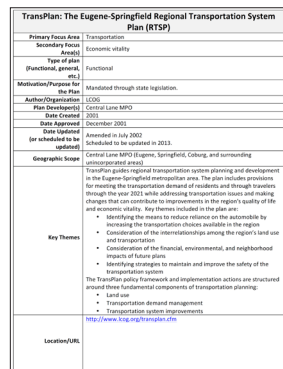
Links to plans, reports and other related documents



Links to external websites and other core area resources



A page dedicated to each of the four core areas, as well as a sub-module dedicated to "other" categories such as Natural Resources and Utilities



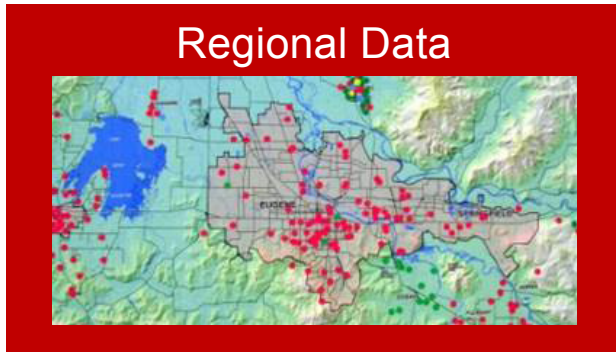
Links to high level visual summaries of the plans and players for each of the core areas of transportation, housing, economic development and community health

Plan Summaries provide a standardized snapshot of most plans. Allowing for quick evaluation and comparison of contents



# Regional Data

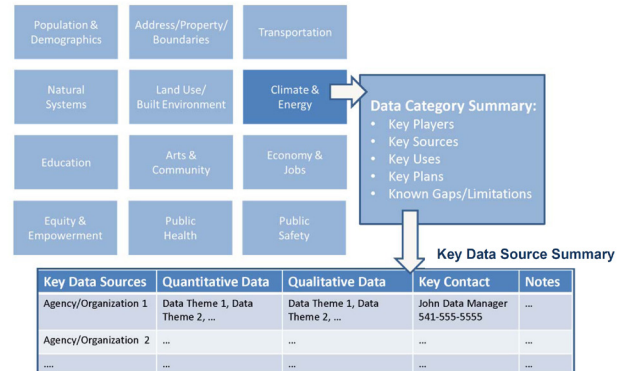
Agencies and their staffs desire data that go beyond their own core areas of expertise. The Regional Data module provides another opportunity for staff to better understand what data exists within the region and how to access it. The module also contains an assessment of regional data with recommendations for addressing ongoing key data gaps and challenges.



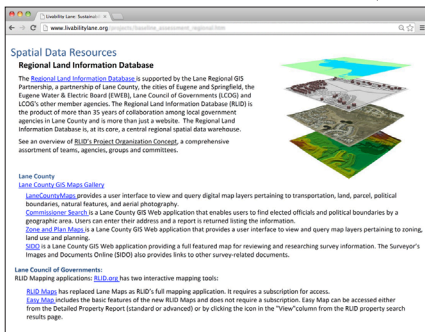
## Key Resources:

- A Regional Data Catalog: a thematic introduction to and ordering of data held within the region
- Baseline Assessment of Regional Data, including an overview of and links to existing data sharing frameworks
- Other data related links and resources

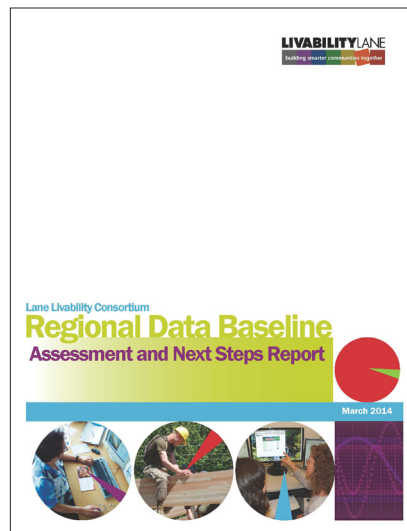
## Access to a Regional Data Catalog



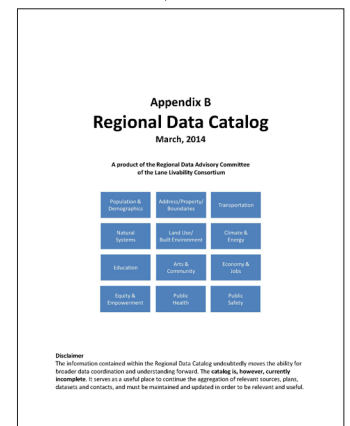
Efforts are under way to develop a regional data sharing platform. This Regional Data Module will be an important connection to that resource.



A page dedicated to existing local data sharing frameworks



Regional Data Baseline Assessment and Next Steps Report



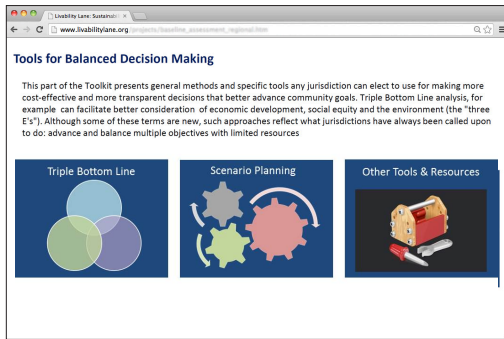


A key component to promoting livability is decision making that results in net positive consequences. Natural, economic and social systems are complex and interconnected. This module contains tools that evaluate the potential consequences of decisions (policies and programs). It also includes related scenario planning tools and recommendations to each of these systems.

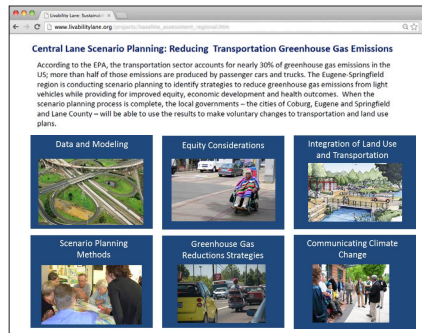


### Key Resources:

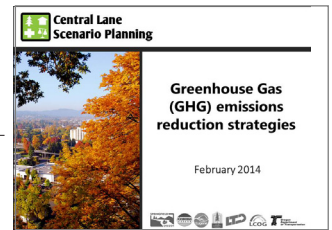
- An introduction to Triple Bottom Line Analysis
- A collection of Triple Bottom Line frameworks and guidance for their application.
- Resources related to climate change and scenario planning, including methods, communication and modeling



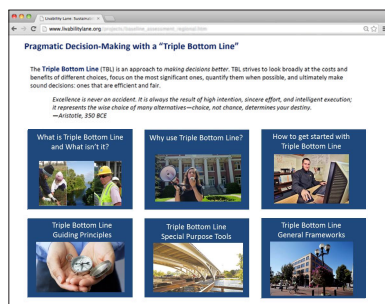
Sub-modules related to decision making



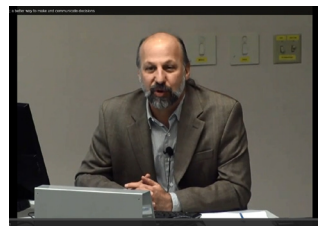
An overview of local climate change scenario planning, including methods, communication and modeling



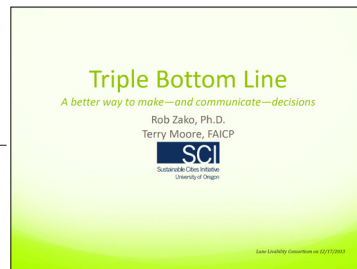
Greenhouse Gas Emission Reductions Strategies (PPT)



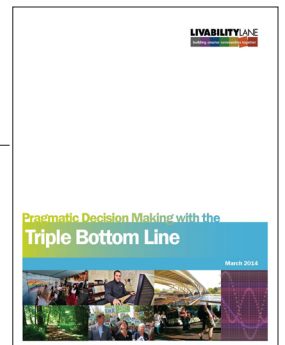
Sub-module dedicated specifically to pragmatic decision making with a Triple Bottom Line.



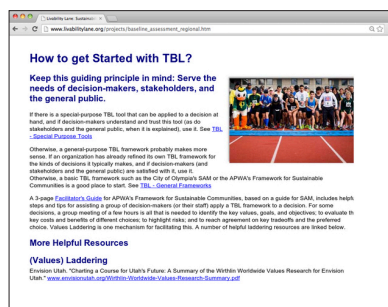
Triple Bottom Line Presentation-SCI (Sustainable Communities Initiative)



Triple Bottom Line PowerPoint (SCI)



Report: Pragmatic Decision making with Triple Bottom Line



A resource outlining how to get started with Triple Bottom Line decision making including resources for values laddering



The economic challenges of today are pressing and complex. Contained within this module is a summary of the Lane Livability Consortium's efforts to further the goals of the Regional Prosperity Plan. These included piloting a brownfields program and increasing understanding of the region's industrial base, resulting in the identification of key areas of industry clustering. The module also contains valuable additional resources related to jobs and the economy.

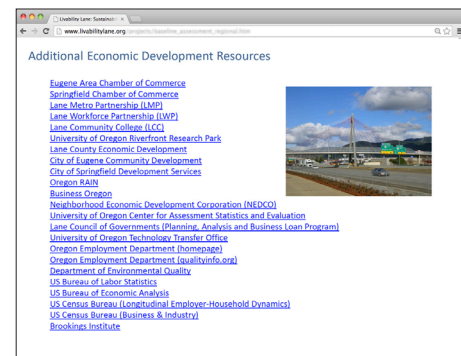
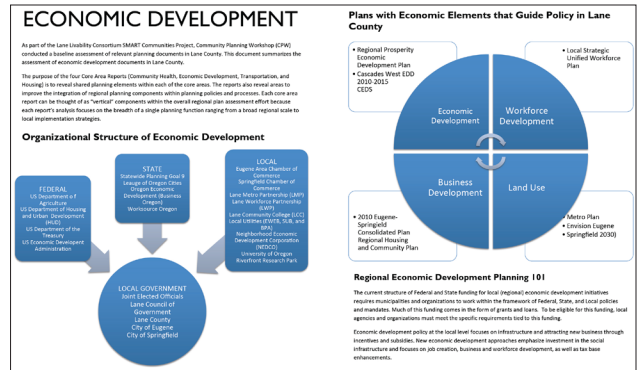


### Key Resources:

- Recommendations regarding issues of workforce development, marketing of regional assets, public goods investment, and strategic outreach to businesses for three key economic clusters: EduTech Cluster, Manufacturing Cluster, Food & Beverage Cluster
- Local Brownfields Assessments overview
- Links to additional Economic Development resources

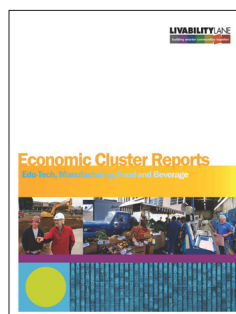


Link to Brownfields Assessment Pilot Program movie (YouTube)

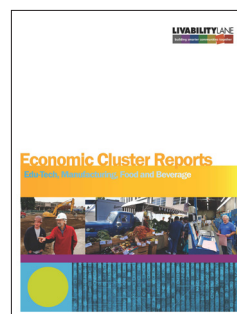


Links to additional resources related to economic prosperity

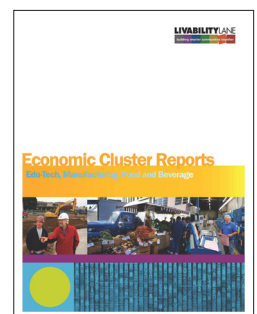
### Overview of Economic Development within the region



Edu-Tech Cluster Report



Manufacturing Cluster Report

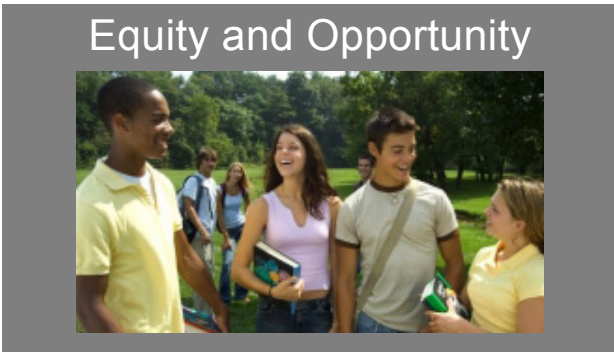


Food & Beverage Cluster Report





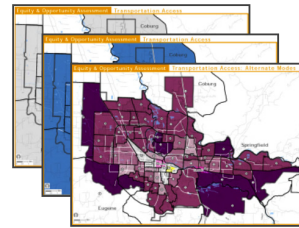
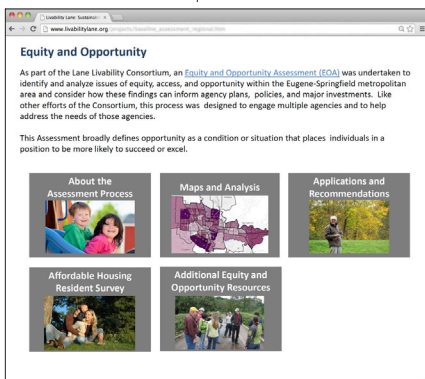
The Equity and Opportunity Module is an tool for examining and incorporating data related to equity, access, and opportunity. The data presented was gathered through multiple forms of engagement. An assessment conducted by the Consortium includes recommendations for policies, programs, and investments based on the analysis.



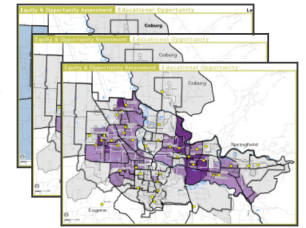
## Equity and Opportunity

### Key Resources:

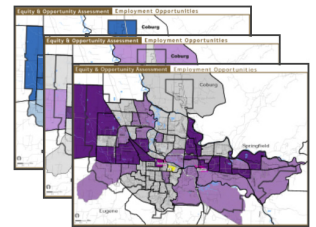
- Equity and Opportunity Assessment: Over 60 Issue Area Maps organized by six themes, Discussion and analysis of each equity and opportunity theme, recommendations by application and issue area
- Survey of Affordable Housing Residents
- Additional equity and opportunity resources and links



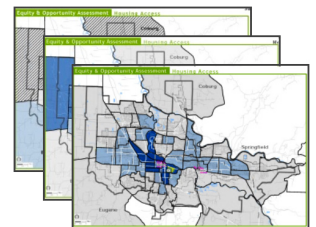
Social & Demographic



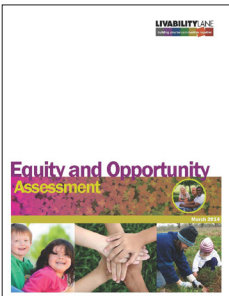
Income & Poverty



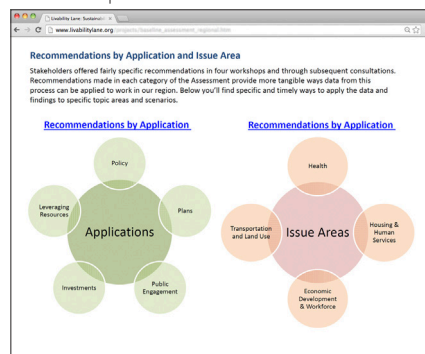
Housing Access



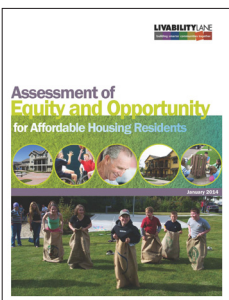
Educational Opportunities



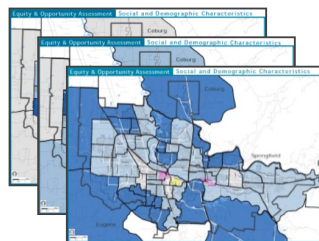
Equity and Opportunity Assessment



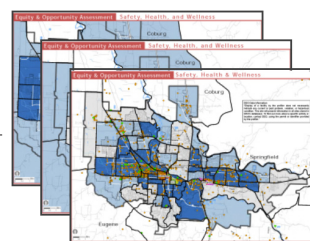
Recommendations by application and by issue area



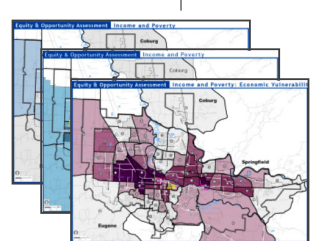
Assessment of Equity and Opportunity for Affordable Housing Residents



Safety, Health and Wellness



Transportation Access



Employment Opportunities

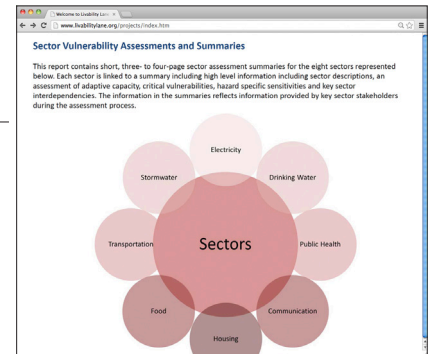
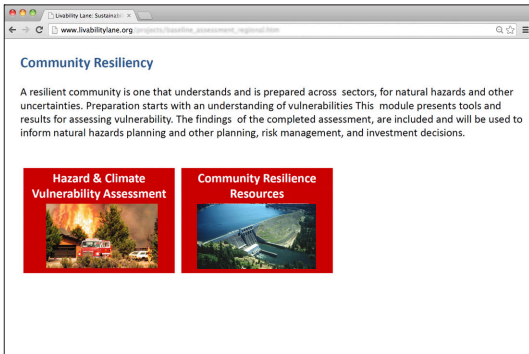


A resilient community is one that understands, and is prepared across sectors for, natural hazards and other uncertainties. This module presents tools and results for vulnerability assessment. The findings of the completed assessments are included and can be used to inform hazards planning, risk management and investment decisions.



**Key Resources:**

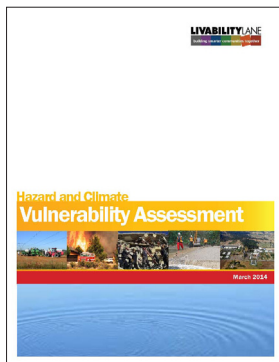
- Recommendations regarding issues of vulnerability (by sector)
- Hazard and Climate Vulnerability Assessment
- Vulnerability Assessment Tool and Guide
- Additional community resiliency resources



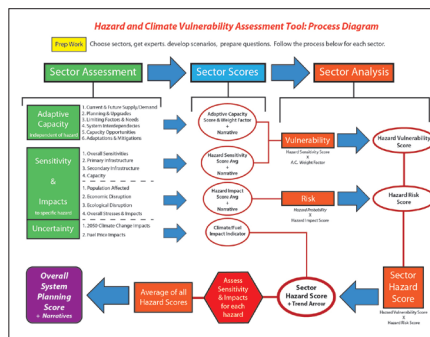
Vulnerability Assessment Summaries for eight individual sectors



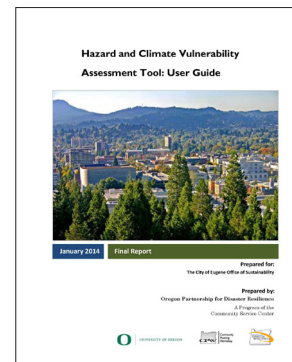
Links to additional Community Resiliency resources



Hazard and Climate Vulnerability Assessment Report



Vulnerability Assessment Tool for general application



Vulnerability Assessment Tool Users Guide

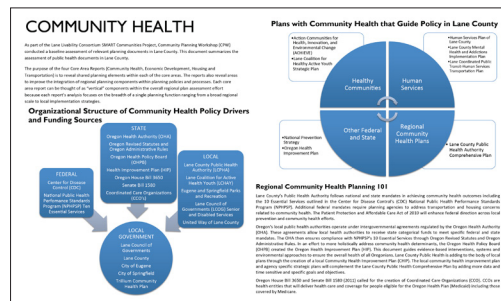


Plans and policies in many sectors outside of health and health care have the potential to affect the health of communities. This module helps highlight the potential health effects and inequities of all plans and policies. This can help decision makers, community members, and organizations avoid inadvertent negative health effects and maximize positive health impacts of development and policies.



### Key Resources:

- Introduction to Health in All Policies (HiAP), including the summary of a local Health in All Policies workshop, including recommendations.
- Direct links to Lane County's Health Assessment and Improvement Plans
- Other Community Health Resources



An overview of Community Health within the region

**Community Health**

Lane County has a strong foundation as a healthy community built around abundant natural resources, collaboration across organizations, hardworking residents, caring neighbors, and innovation. We are proud of these assets, but we know there is still much work to be done.

Overview of Community Health in Lane County | Health in All Policies | Lane County Community Health Assessment | Additional Community Health Resources

**Tools and Resources for Community Health**

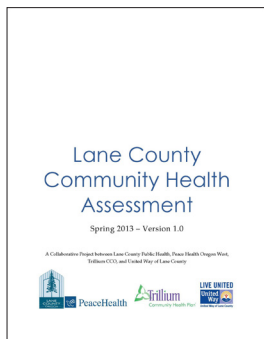
Public Health Livability Toolkit Connections

- Equity and Opportunity Toolkit Module
- Community and Regional Plans, Community Health Toolkit Module
- Local Community Health Overview
- Additional Health in All Policies Resources

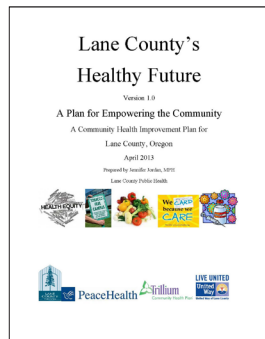
Key Local Agencies and Organizations

- Lane County Public Health
- Trillium Community Health Plans (Coordinated Care Organization)
- PeaceHealth
- Lane County Behavioral Health

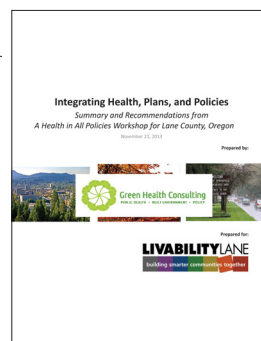
Links to documents, summaries and websites with additional Community Health information



Lane County's Community Health Assessment



Lane County's Community Health Improvement Plan



A summary of the Health in All Policies workshop conducted by Lane County



Community Health Assessment PowerPoint Presentation



The idea of reaching across traditional boundaries and working in coalitions to get to greater community impacts holds tremendous promise. The Coalition Building module summarizes the necessary elements for effective coalitions, including tools and resources, and a discussion of how Lane Livability Consortium has worked to create new partnerships and coalitions in our community.



**Key Resources:**

- Resources for creating impactful coalitions including: collective impact in addressing common issues, leadership that spans boundaries, and governing through networks.
- Tools for fostering individual and community leadership
- Additional coalition building resources

